



Strategic Environmental Assessment in Cambodia: Status Challenge and Opportunities

Heng Hong, Mr.

Deputy Director Department of Community Livelihood

General Directorate of Local Community

Ministry of Environment

Kunming, Yunnan Province, China 20th March 2019

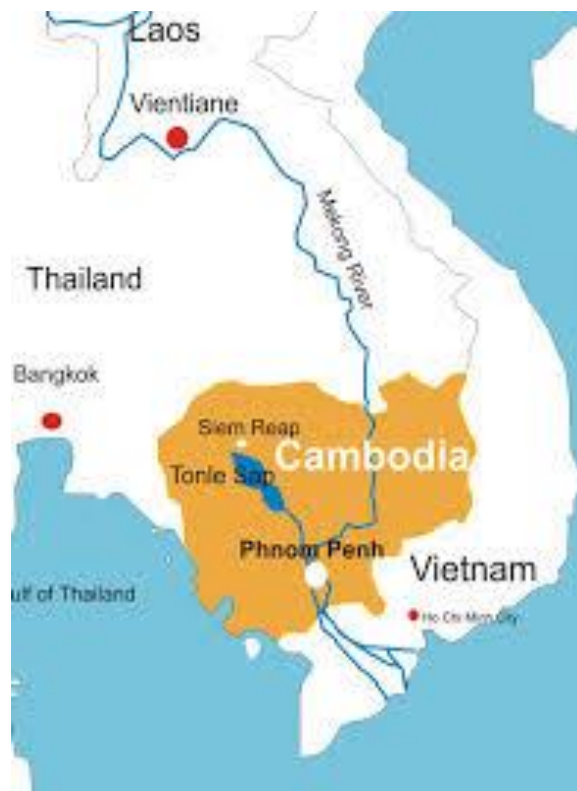
CAMBODIA At a Glance

Background

- ✓ 15.14 Millions in 2013*
- ✓ Area: 181,035 Sq.Km
- ✓ Pop. growth rate 1.54%**
- ✓ Poverty rate in 2015 14%**
- ✓ Economic Growth in 2015: 7%*
- ✓ GDP: 1,215US\$ in 2015**

Key challenges

- Development pressure
- Environmental protection
- Climate change
- Sustainable lifestyle at remote areas
- Human resources
- Governance/ Coordination / Planning, etc



* World Bank 2014

** NIS 2014

Policy, legal framework & institutions & Sub-develop

- Laws: Environmental Protection (Forestry, Fisheries, Land Mgt, PAs...)
- National Forestry Policy
- Rectangular Strategy of RGC (Phase III)
- NPSP on GG 2013-2030
- NSDP 2014-2018
- NCSD-MoE

Opportunities

- Required EIA: Sustainable development
- Show cases and initiatives
- Highlighted in key policies & legal frameworks of RGC
- Established inter-ministerial body, i.e NCSD
- Priority areas of NCSD
- SEA structuring into NCSD
- Environmental Code

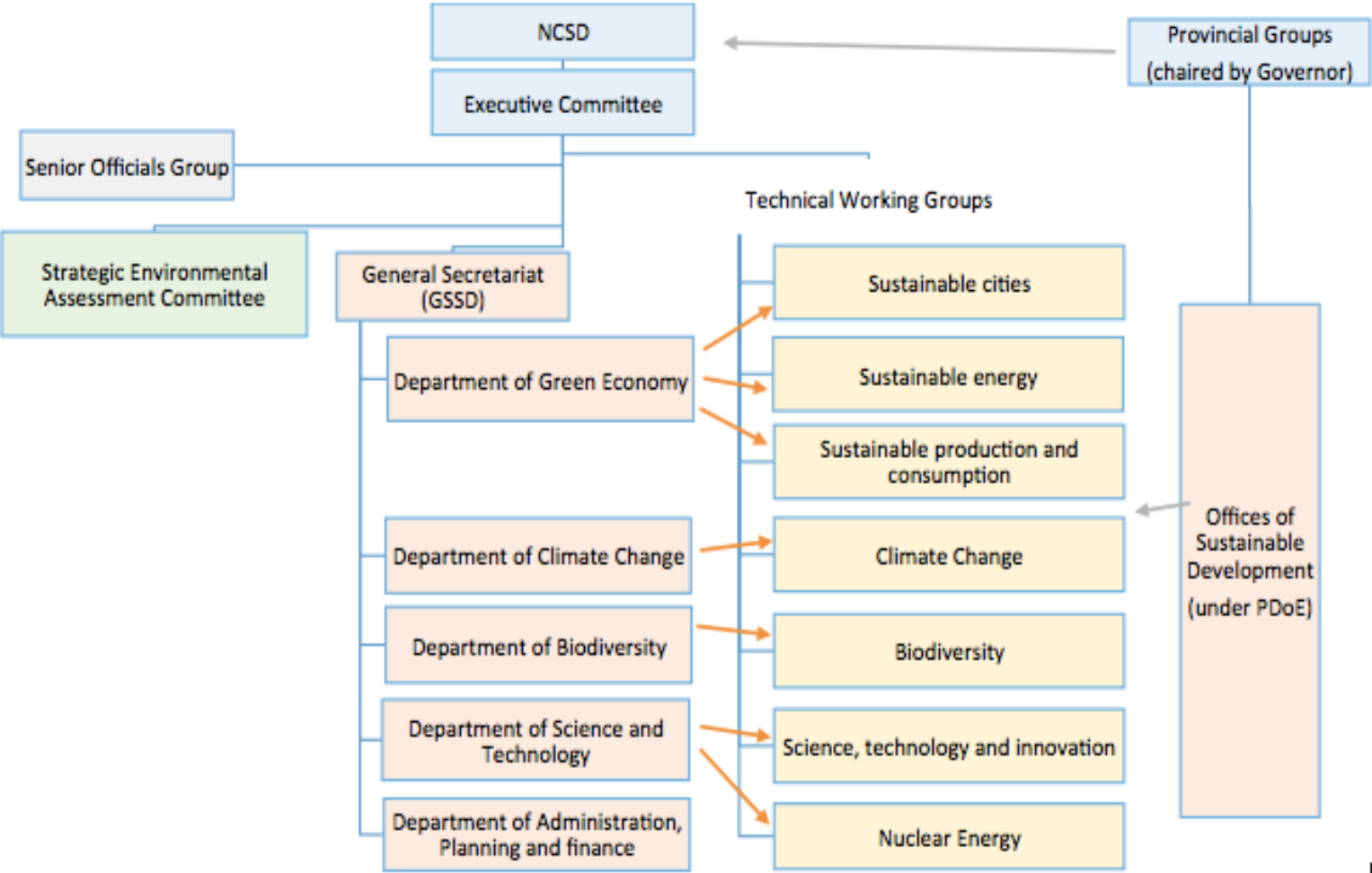
SEA: Status and Opportunities

- Lack of legal framework, but it is generally covered in Law on Environmental Protection,
- A draft Environmental Code covers SEA
- SEA Committee integrated into NCSD structure
- Roles and Responsibilities of SEA Committee to be drafted
- Cases of SEA in sectors
 - Tourism in 2009
 - Forestry sector in progress
 - Fisheries ?
 - River sand mining and ELC in progress?
 - Mining sector in Northeastern Provinces
 - ???

Example of SEA Structure (Draft in August 2016)

National level

Provincial level



→ Provincial inputs to TWGs / NCS D work

Challenges

- Resources (i.e human, finance, etc)
- Economic vs environment objective
- Coordination and Institutional arrangements
- Legal framework
- Political will

Taking home messages

- Mandatory?
- Integrated plan mechanisms?
- Quality and independence
- Decision-making process
- Public & stakeholders participation

Conclusions

- SEA is timely, i.e human capacity / institutions
- Networks, i.e knowledge management and sharing

Thank You for Your Attention!

